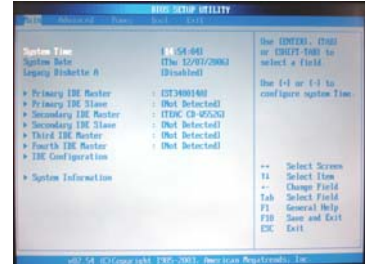




Road Hog BIOS Setup

This document describes how to restore the default BIOS settings for the Road Hog console.

1. Attach an USB keyboard to the console and power on the console.
2. During the boot process, press the DEL or DELETE key to enter the BIOS settings screen.
3. The BIOS Setup Utility will open.
4. Press F5 to restore the BIOS to the default settings.
5. Follow the guidelines below to restore the custom Road Hog BIOS settings. Use the arrow and enter keys on your keyboard to make changes.



Main :

- Set the current time and date
- Legacy Diskette A : **Disabled**

Advanced :

Chipset

North Bridge Configuration

- Initiate Graphic Adapter : **PCI/IGD**

Onboard Devices Configuration

- HD Audio Controller : **Disabled**
- Onboard 1394 Controller: **Disabled**
- Onboard PCIE GbE LAN: **Disabled**
- Serial Port1 Address : **Disabled**
- Parallel Port Address : **Disabled**

Power :

- ACPI 2.0 Support : **Enabled**

APM Configuration

- Restore on AC Power Loss : **Power On**
- Power On By PCI Devices: **Disabled**
- Power On By PCIE Devices: **Disabled**
- Power On By PS/2 Keyboard: **Disabled**

Hardware Monitor

- Fan Profile: **Silent**

Boot :

Boot Device Priority

- 1st Boot Device : **ATAPI CD-ROM**
- 2nd Boot Device : **IDE**
- 3rd Boot Device : **Disabled**

6. When complete, press F10 to Save changes and exit the BIOS Setup Utility.

7. Once saved, the console will boot as normal.

