



Hog 2PC 3.4.2.x Release Notes

Current version: 3.4.2.62 December 5, 2005

ROM Library Changes

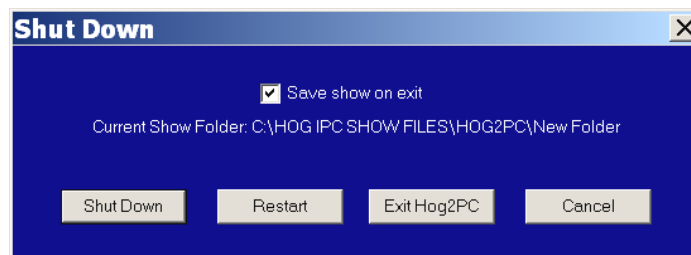
Version 6.5 of the ROM library is included with version 3.4.2.62. This ROM contains ALL fixture libraries known to exist for the Wholehog 2 operating system. Shows created with libraries from this version will load the fixtures into the Wholehog 2 or Hog 500/1000 consoles running version v3.3 build 177.

New Features

3.4.2.28

Improved Auto-Save

The auto-save function now displays the drive and folder location that the auto-save will occur. Also if saving to the same folder a confirmation will occur; if the folder is changed before exiting the auto-save will not be checked by default.



Note: Dialog shown is on Hog iPC, stand alone Hog 2PC it is slightly different in appearance.

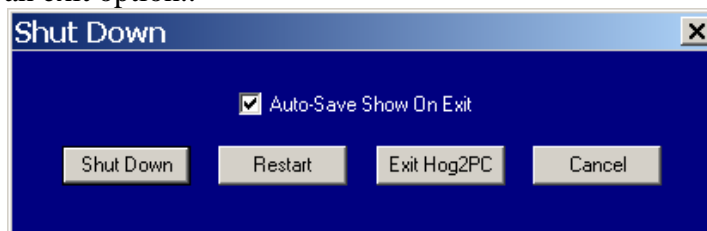
3.4.2.15

Keyboard Shortcuts

A new feature disables Hog 2PC keyboard shortcuts to prevent accidental commands when an external keyboard is connected to the Hog iPC console. This option appears in the Hog iPC Configuration Panel (version 1.1.0.x) and is ON by default. When activated, the only keyboard shortcuts that will function are: TAB + F1 thru F10 keys for windows functions, Q for Try Cue, and NumLock for SET.

Auto-Save Function

The auto-save check box will be selected by default and on any of the above exit options the show will be saved in its current folder. If you wish to disable this function, uncheck the auto-save box prior to selecting an exit option..



ROM Library Changes

Version 6.2 of the ROM library is included with version 3.4.2.28. This ROM contains ALL fixture libraries known to exist for the Wholehog 2 operating system. Shows created with libraries from this version will load the fixtures into the Wholehog 2 or Hog 500/1000 consoles.

Bug Fixes for v3.4.2.15 (June 10, 2005)

- 6925 Crash when un-configuring external superwidget
- 6893 Need option to disable Hog2PC external keyboard shortcuts
- 6946 Croaker when auto-updating Position Palette
- 6949 Add auto-save on exit option
- 7164 Croaker when using invalid syntax
- 7126 Virtual Hog 2PC desk needs to go to default position if 3rd monitor is not detected.
- 7227 croaker when scrolling with programming wing

Bug Fixes for v3.4.2.28 (July 13, 2005)

- 6839 Update Super ROM library
- 7399 Auto-Save should not function if no show is loaded
- 7403 Windows thinks standard widget is a Internal Super Widget and vise versa
- 7431 Display current folder in shutdown screen
- 7432 Effects engine error iPC Hog2
- 7453 WYG Driver typo in Registry Key
- 7497 When saving on exit with a floppy drive disk times out before finishing

Bug Fixes for v3.4.2.62 (December 5, 2005)

- 8113 Overdrive with no Output selected - memory croaker