



Introduction to HogPC

# Starting HogPC

- Click on the HogPC icon on the Start Menu
- The Show Locator window opens:



# Starting HogPC

- Use the **Folder Viewer** on the left to select either a folder that contains an existing show, or a folder to be used for starting a new show
- Click the **OK** button to proceed



Note: Folders containing an existing show will be shown in Bold text

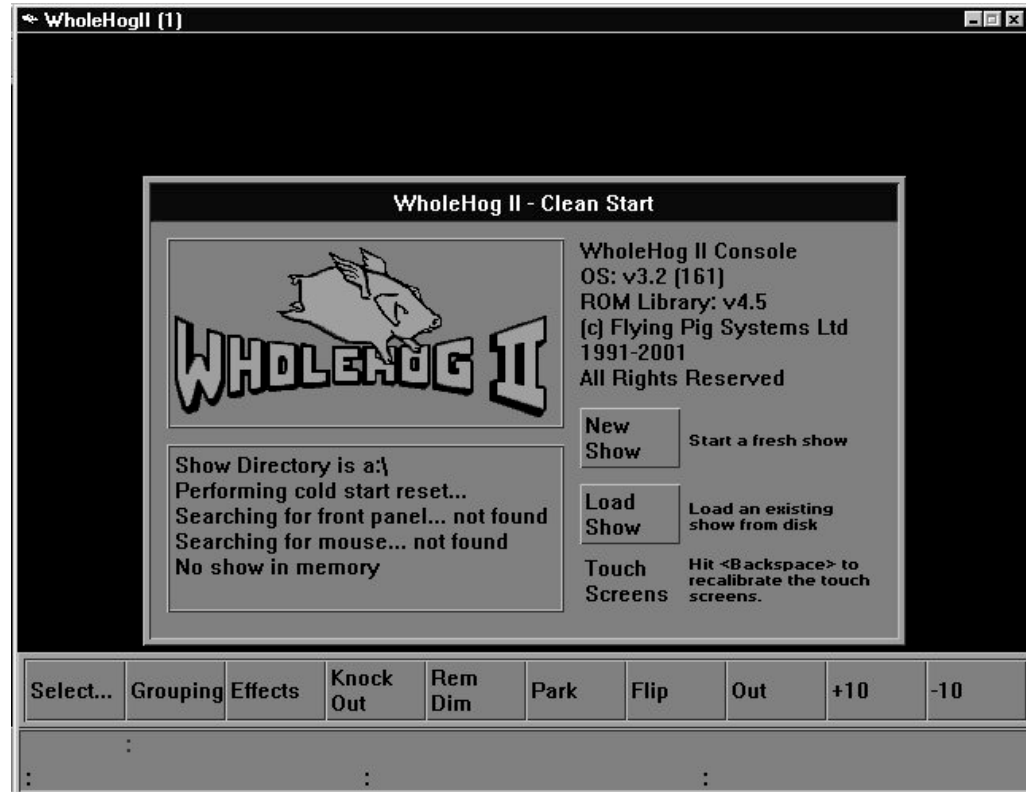
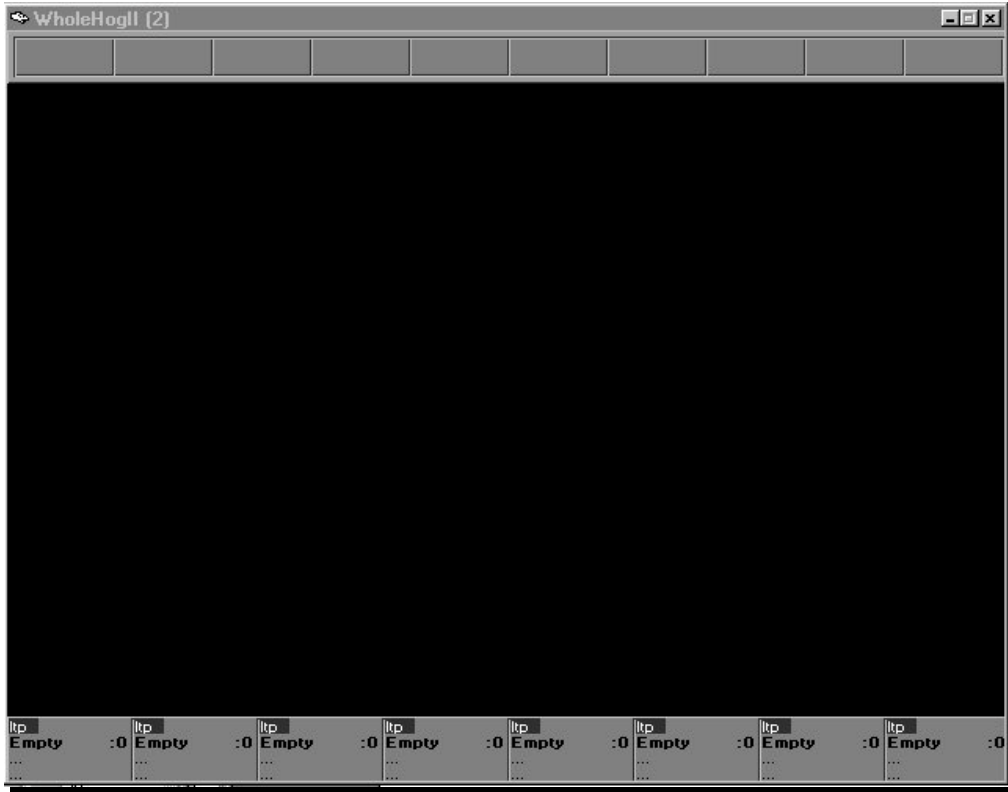
# Using HogPC

- The Frontpanel window:




# Using HogPC

- The Touchpanel windows:

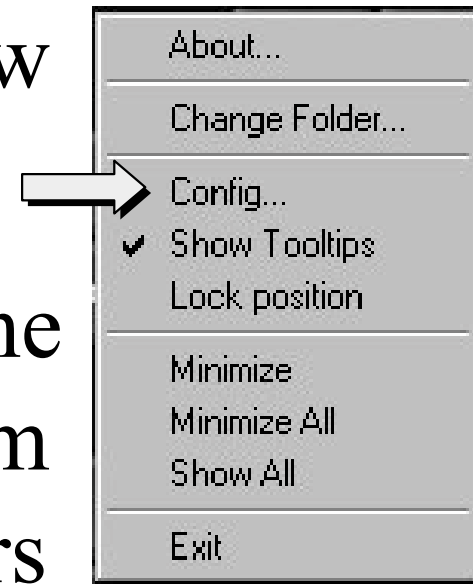


# Using HogPC

- Touchpanel Windows
  - Work in same ways as touchpanels on the Hog II console
- Frontpanel Windows
  - To spin Encoder wheels
    - Press & hold the left mouse button over a wheel and drag up/down, or;
    - Press and hold F10 (wheel 1), F11 (wheel 2), or F12 (wheel 3), then either move the mouse up/down or use cursor keys to spin the Encoder wheels
  -  – Click on the PIG key to latch it into the ‘ON’ state; PIG key stays on until second button is pressed

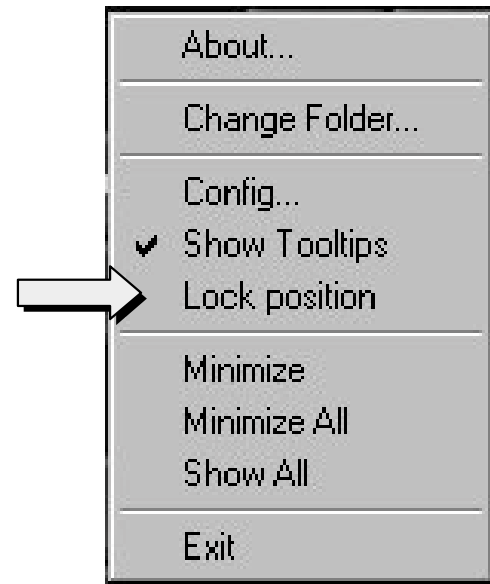
# DMX Output

- Connect a DMX Widget to the USB port of the computer
- Right click on the frontpanel window
- Select 'Config'
- Click on the box corresponding to the to the port and select the widget from the list of serial numbers that appears



# Changing Window Positions

- Both Touchpanel windows may be moved by clicking and dragging on the Title bar
- The Frontpanel can also be moved by clicking and dragging on any blue area of window
  - Tip: Right click on Frontpanel window and select 'Lock Position' to prevent accidentally moving the Frontpanel while programming
- When HogPC is launched, all windows will open in the same positions assigned when HogPC was last used



# Minimizing Windows

- Both Touchpanel windows as well as the Frontpanel window can be minimized;
  - Right click on the Frontpanel window
  - Select from
    - Minimize All (all 3 windows)
    - Minimize (Frontpanel only)
    - Show All (restores all minimized windows)
  - Touchpanel windows may be minimized individually in the same manner as any other Windows application



# Restoring Default Window Positions upon Hog PC startup

## *Steps:*

- Create a shortcut to HogPC.exe
- Right click on the shortcut
- Select Properties
- Click in the Target field
- Add a space, a hyphen and then a lower case d
  - For example: c:\program files\flying pig systems\HogPC.exe -d
- Run HogPC from this shortcut in order to restore windows to default positions each time HogPC is launched

# Keyboard Shortcuts

		Group	Pos	Col	Beam		Macro	Page	Fx	List		Time			
←	1	2	3	4	5	6	7	8	9	0	-	+	←		
TAB	tryQ				Rec	Time		Update		undO	coPy	main stop	main go		
CAPS	Active	Setup	Delete			Goto	Hllite	skip back	skip fwd	Load	next page	@	full	↵	
↑	toggle mouse	releaZ	thru	Clear		Blind	Next	Move		.	/	↑			
PIG		ALT							ALT				PIG		

# Keyboard Shortcuts

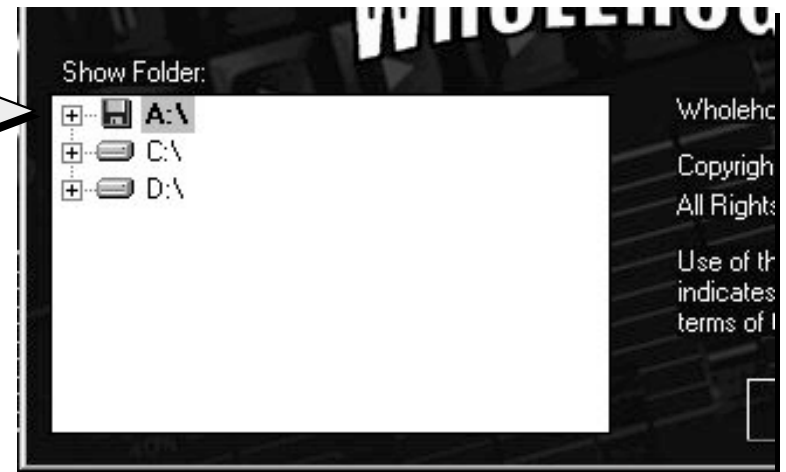
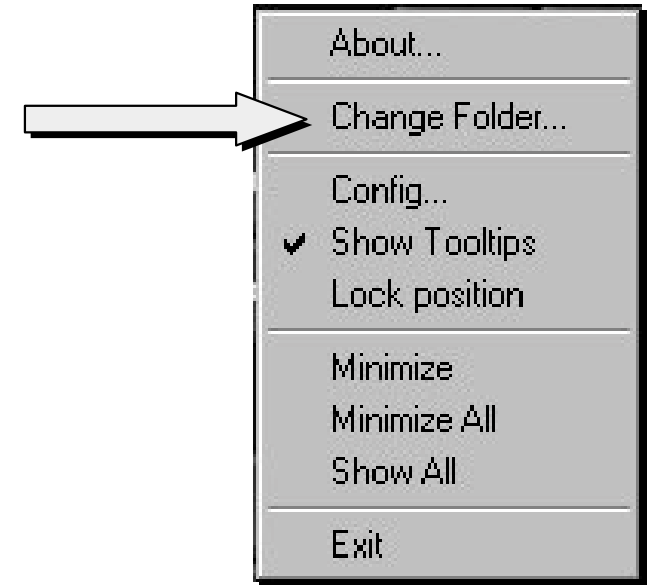
<u>Specifiers</u>	<u>Command Keys</u>	<u>Combinations</u>	<u>Wheels</u>	<u>Others</u>
Group F1	Active A	Choose X	Wheel 1	At (@) @`
Position F2	Blind B	Shift + Number (1-8)	F10 + mouse/cursors	Backspace Bkspc
Color F3	Clear C	GO X	Wheels 2	Enter Return/Enter
Beam F4	Copy P	Tab + Number (1-8)	F11 + mouse/cursors	Full ~#
Macro F5	Delete D	Stop X	Wheel 3	Minus (-) -
Page F6	Gobo G	~ + Number (1-8)	F12 + mouse/cursors	Next N
Effects F7	Highlight H	Tool Keys		Pig Ctrl
List F8	Load L	Shift + Func (F1-F10)		Plus (+) +
Time F9 or T	Main Go }]	Window Keys		Set Numlok
	Main Stop {[	Tab + Func (F1-F10)		Setup S
	Move M			Slash (/) /
	Next Page ;:			Thru * or X
	Record R			Toggle Cursor \
	Release Z			Func.
	Skip Down K			
	Skip Up J			
	Try Q Q			
	Undo O			
	Update U			

# Changing the Show Folder

*2 Methods to change the folder  
HogPC uses to save and load  
shows:*

– Method 1:

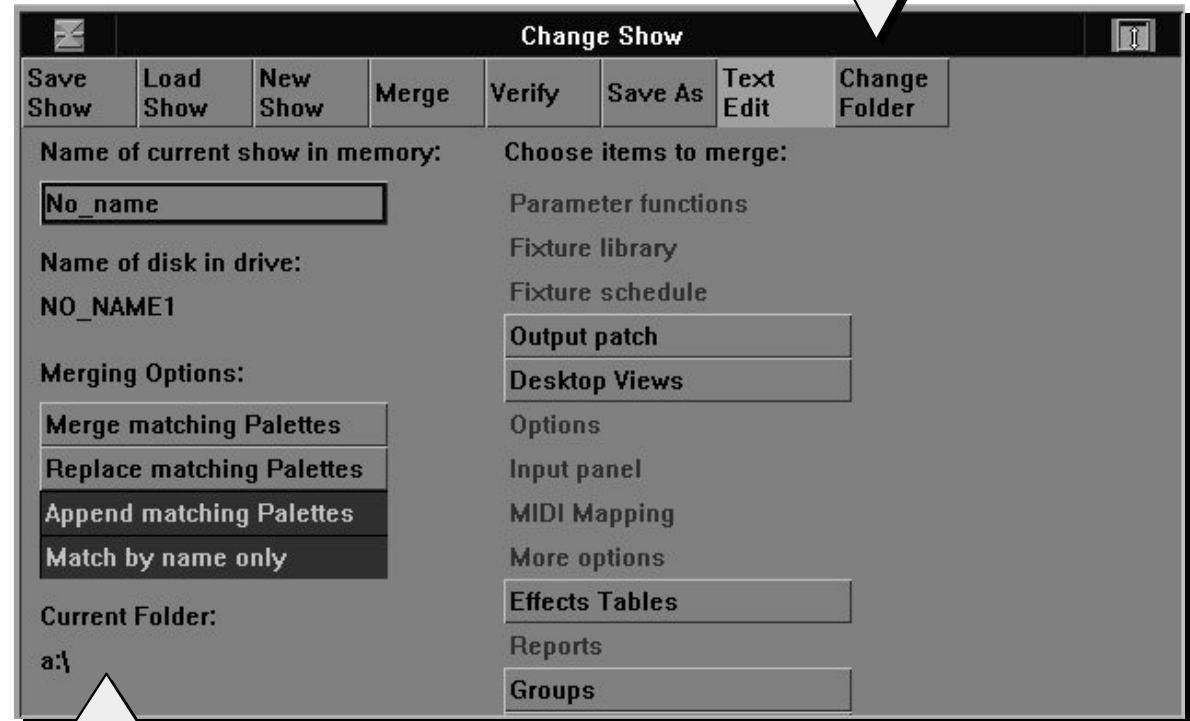
- Right click on the Frontpanel
- Select 'Change Folder'
- The Show Locator Window opens to allow selection of a different folder
- Select the floppy (A:\) drive in the folder list



# Changing the Show Folder

- Method 2

- Open the Change Show Window
- Click on the Change Folder button in the top toolbar
- After selecting a new folder, click OK
- HogPC will begin using the folder specified
  - Note: The folder currently in use by HogPC is displayed at the bottom left of the Change Show window



# Auto Start

- To launch HogPC when the PC is booted:
  - Create a shortcut to the HogPC.exe application
  - Right click over the shortcut and select ‘Properties’ from the menu
  - Click in the Target Field and add a space, a hyphen, a lower case letter a, another space, then the path of the directory that should be run at startup
    - **Example:** `C:\Program Files\Flying Pig Systems\HogPC.exe –a C:\ashowdir`
  - When the shortcut is run both TouchScreens as well as the FrontPanel window open and the Load Show button is automatically pressed to load the show from the designated Show Directory
  - To have HogPC run at startup of PC, simply move the shortcut into the Startup folder in the Windows Start Menu

# Where to Get More Information

[www.highend.com](http://www.highend.com)

[www.flyingpig.com](http://www.flyingpig.com)

[support@flyingpig.com](mailto:support@flyingpig.com)

US: 1.800.890.8989

UK: 44.20.8579.5665